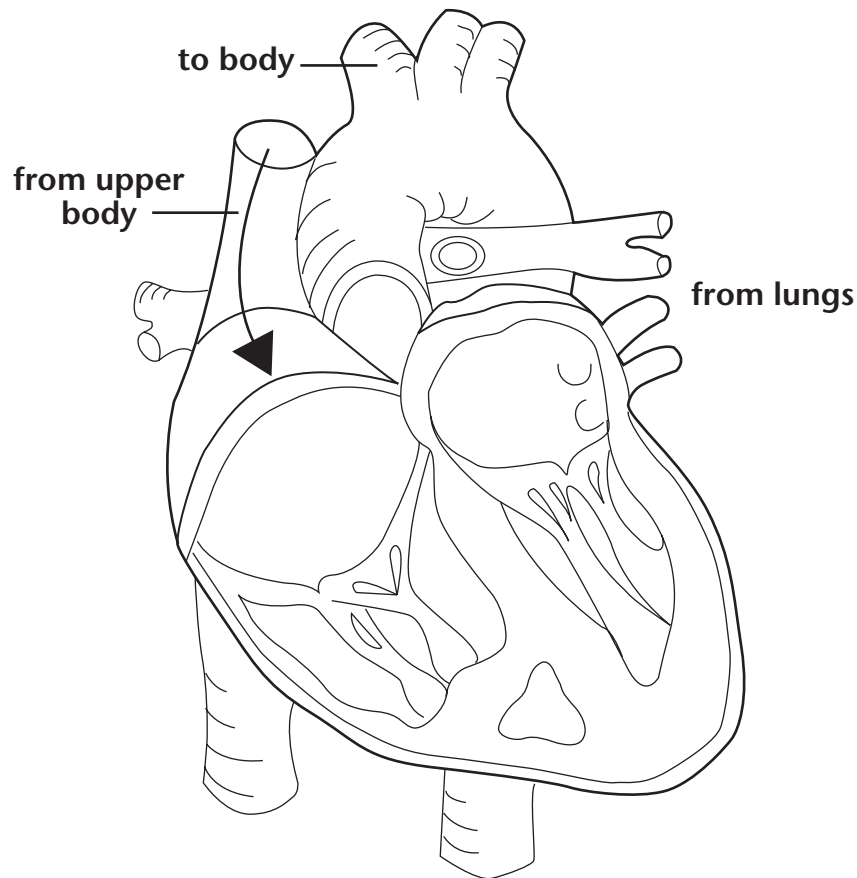


## The Human Heart

The human heart has four chambers: right atrium, right ventricle, left atrium, and left ventricle. Blood flows from the body into the right atrium. Valves keep blood flowing in only one direction.

*Follow the prompts to identify parts of the human heart. The diagram shows the heart as if viewed from the front, so left and right are switched.*

- Color the left atrium orange.
- Color the left ventricle red.
- Color the right atrium yellow.
- Color the right ventricle blue.



*Use the diagram to answer the question.*

1. A valve is located between the right atrium and the right ventricle. What is the role of valves in the heart?

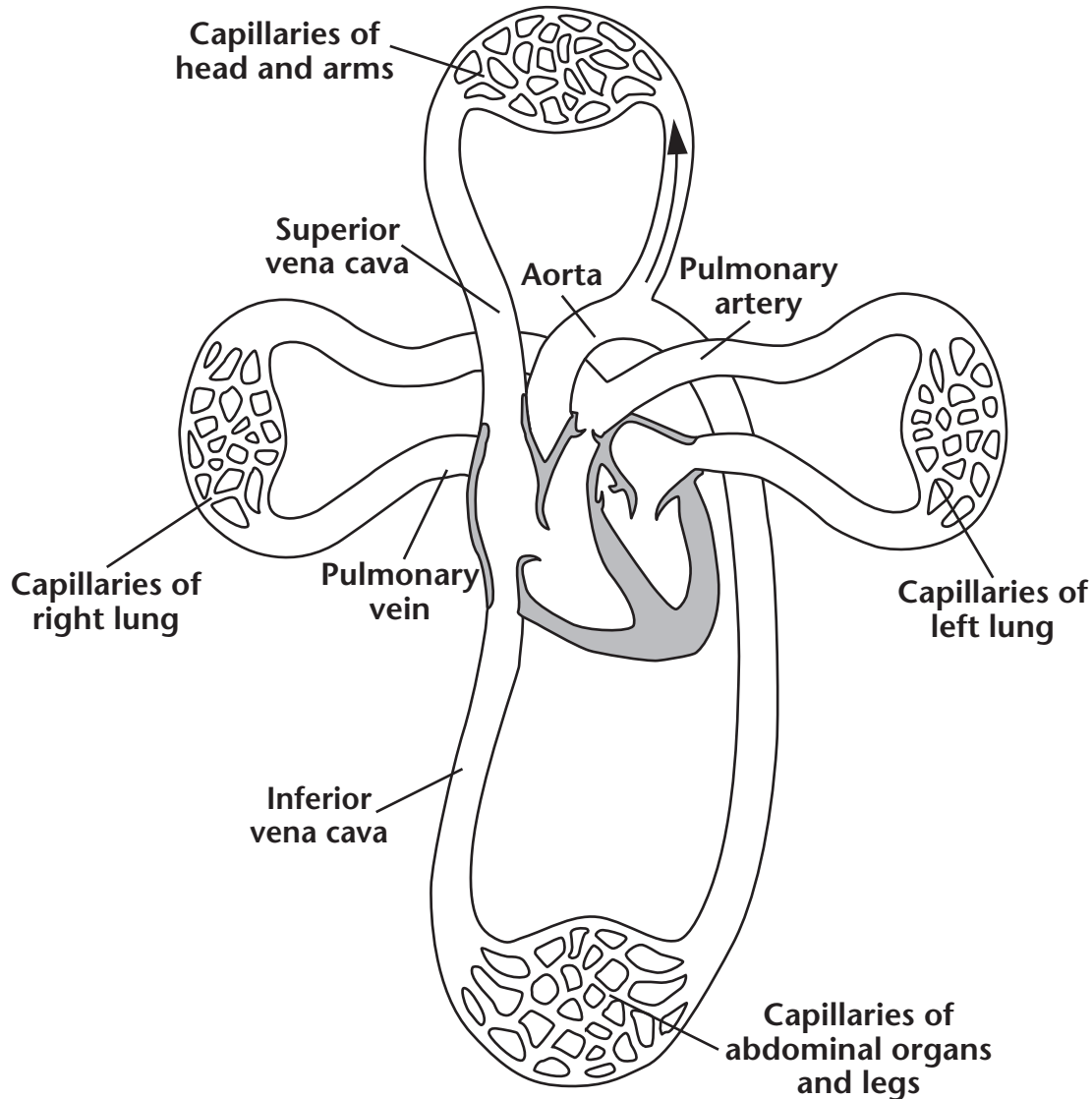
---

---

## The Circulatory System

The human circulatory system moves blood through two primary pathways. One connects the heart and lungs, and the other connects the heart and the rest of the body.

*Draw arrows to show how blood moves through the circulatory system. One has been drawn for you.*



*Use the diagram to answer the question.*

1. Through which blood vessel does blood return to the heart from the head and arms?

\_\_\_\_\_

**Blood Vessels**

As blood flows through the body, it passes through three types of blood vessels—arteries, veins, and capillaries.

*Complete the table. Fill in the missing information.*

Blood Vessels	Structure	Function
arteries	thick walls containing connective tissue, endothelium, and smooth muscle	
	walls containing connective tissue, endothelium, and smooth muscle; large ones also have valves to control the direction of blood flow	carry blood toward the heart
capillaries		bring nutrients and oxygen to cells and remove carbon dioxide and waste

*Use the table to answer the questions.*

1. Which are the smallest blood vessels? Circle the correct answer.

capillaries      veins

2. How does exercise help veins function?

---

---